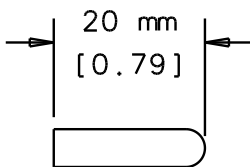
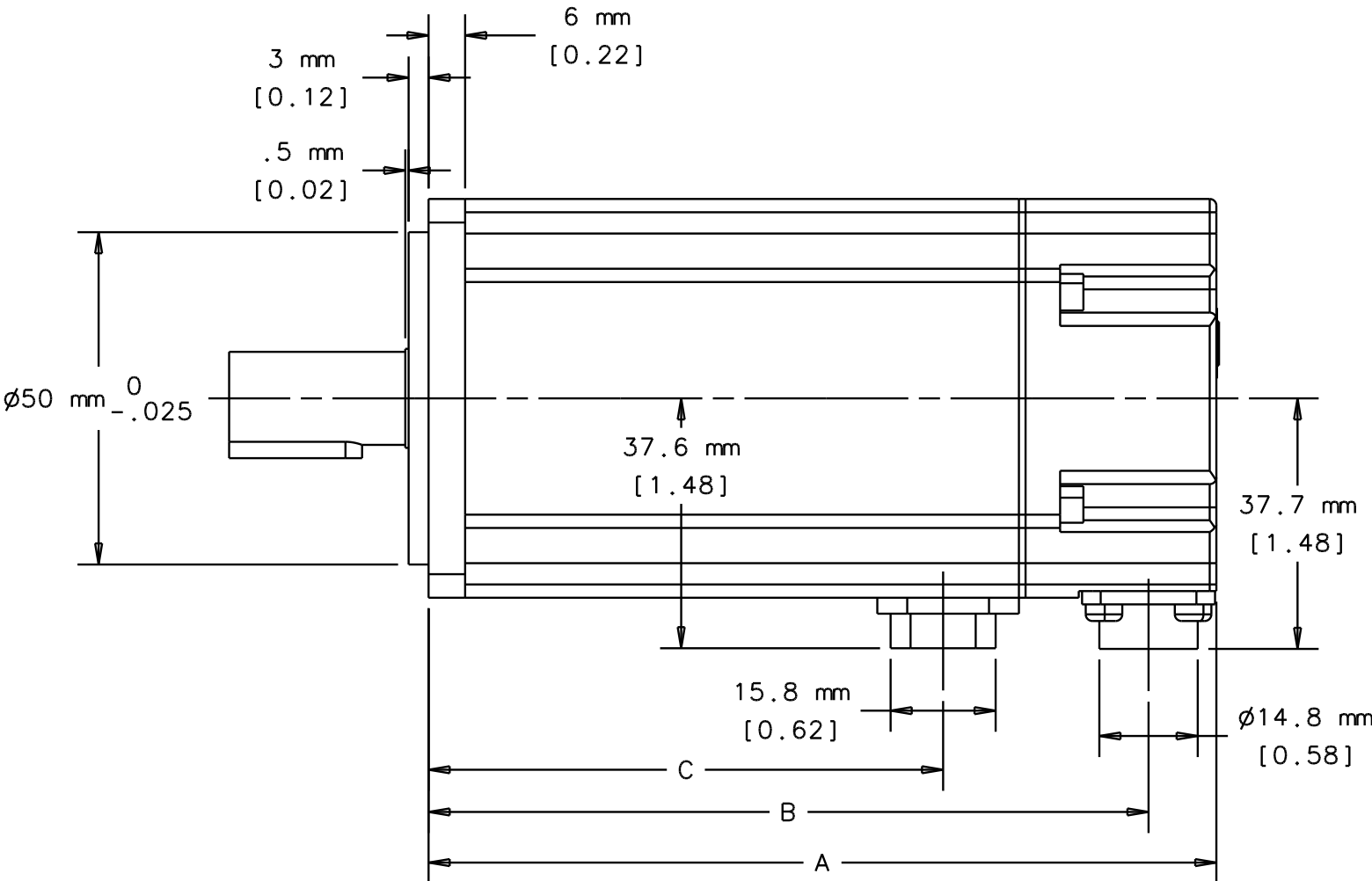
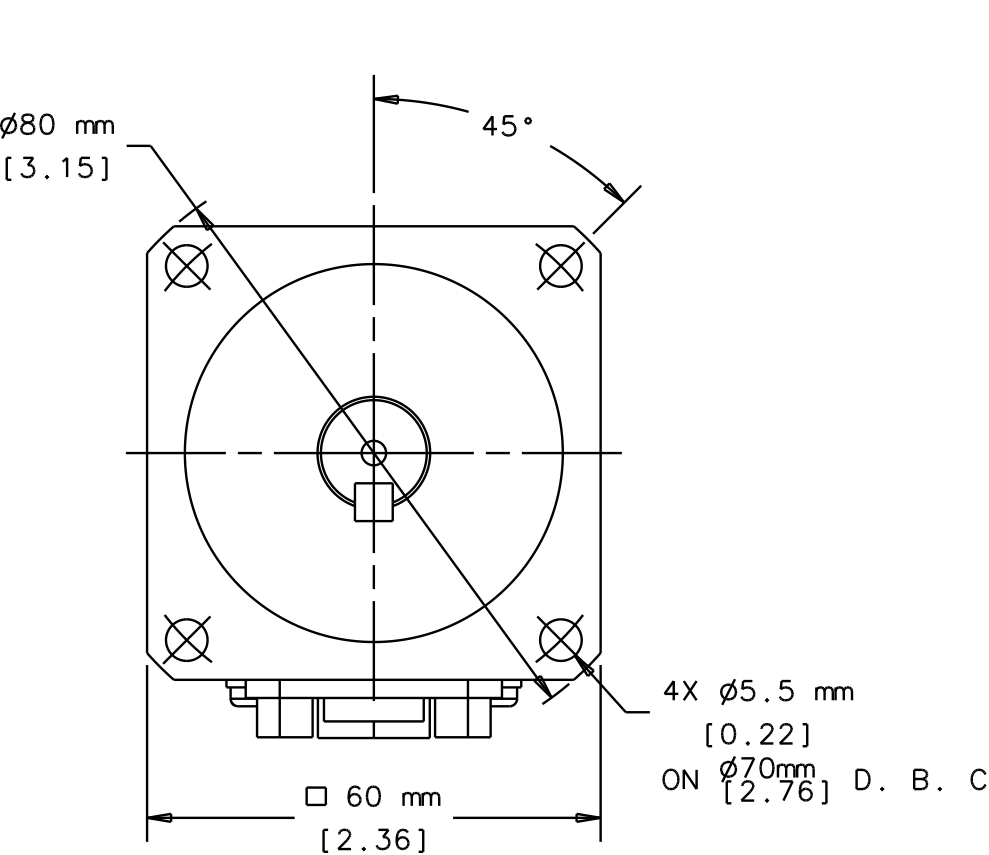
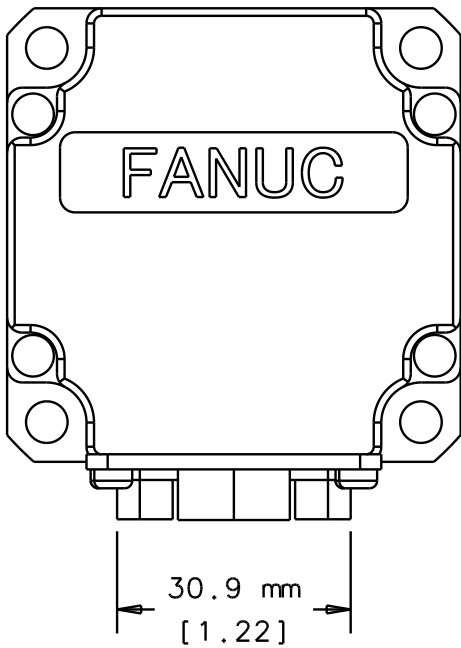
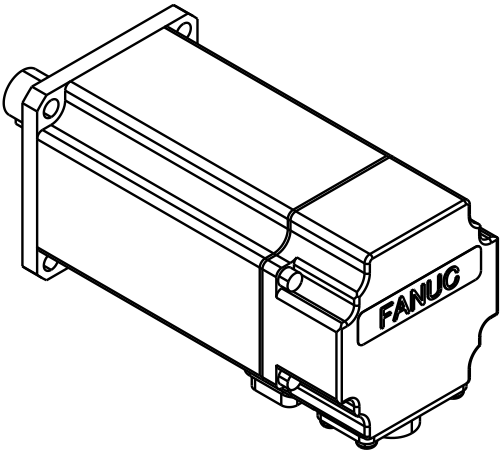
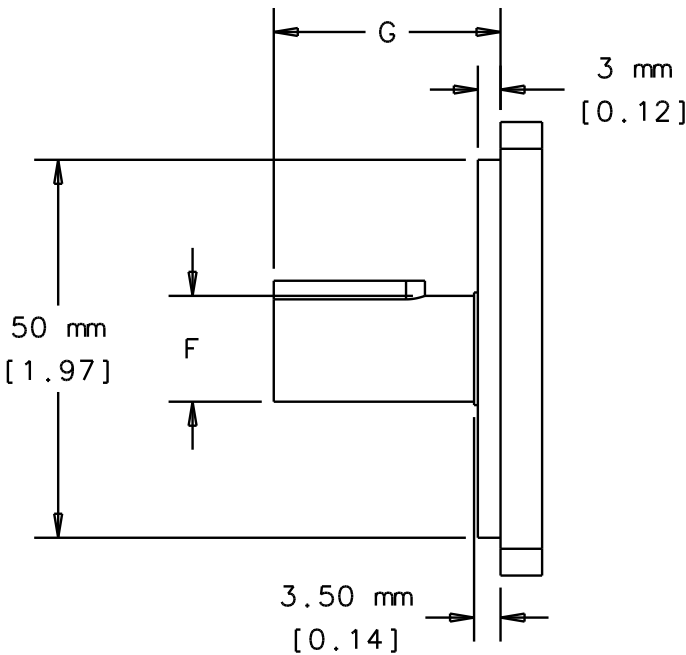
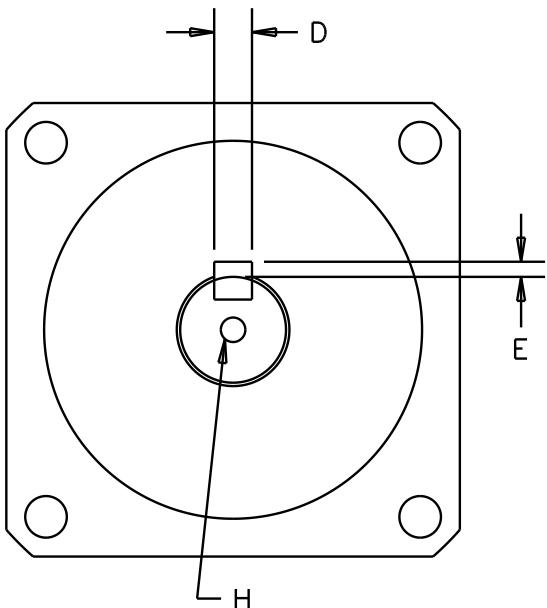


PART NUMBER VERSION STATUS					DRAWING REVISIONS		
					REV	DESCRIPTION	APPROVED
					0	ORIGINAL ISSUE	BLH 01-30-07



OPTION:
STRAIGHT SHAFT
WITH KEYWAY
A06B-11□-B203
-B503



- NOTES:
- SHAFT DIA RUNOUT MAX 0.02mm
 - RABBET DIA. ECCENTRICITY MAX 0.04mm
 - MOUNTING FACE RUNOUT MAX. 0.06mm
 - MAXIMUM RADIAL LOAD 196N (20kgf) [44lb]

MODEL	A	B	C	D	E	F	G	H
β0.4is	75	65	34.5	3 ^{0.025}	1.2 ^{0.1}	9 ^{0.009}	25	M3X6DEPTH
β0.5is	89.5	79.5	49	3 ^{0.025}	1.2 ^{0.1}	9 ^{0.009}	25	M3X6DEPTH
β1is	118.5	108.5	78	5 ^{0.03}	2 ^{0.1}	14 ^{0.011}	30	M4X10DEPTH

GE FANUC AUTOMATION N.A. INC. CONFIDENTIAL AND PROPRIETARY INFORMATION					TITLE: β0.4is, β0.5is AND β1is FANUC MOTOR DIMENSIONS CNC		
DRAWN BY: BOBBY L HICKS	DATE: 01-04-07	UNLESS OTHERWISE SPECIFIED DIMENSIONS ARE IN IN./[MM]. TOLERANCES ON:			GE FANUC Automation North America, Inc. Charlottesville, Va. U.S.A.		
APPROVED BY: S. GLENN THOMAS	DATE: 01-30-07	2 PL DECIMALS ±			CAD INFORMATION: CNC MISC		
ISSUED:	THIRD ANGLE PROJECTION	3 PL DECIMALS ±			GECS CODES:		
		ANGLES ±			DWG. NO.		
		FRACTIONS ±			PLOT SCALE 1.0		
					SHEET NO. 1		
					CONT. ON FL		